

Surface skimmers

B 600 EVO

B 500 EVO

The new B 600 EVO provides completely new possibilities for aesthetic architecture for large pools.

With the new EVO skimmers, pool design options multiply as pools and surroundings merge. The strainer basket is a part of the front insert. So no service opening is required at the edge of the pool surrounding.

The new B 600 EVO: highly attractive waterline and extremely high circulation capacity

Thanks to a 636 mm wide and only 75 mm high intake opening, the B 600 EVO has an extremely aesthetic appearance. As a result, a highly attractive waterline with surface skimmer pools can be achieved.

On account of the large skimmer flap, the B 600 EVO achieves an extremely high circulation capacity in the rear part of the surface skimmer by means of a suction port with a 2" female thread and a 2½" male thread that considerably optimize the pipe friction losses. As a result, even large-volume swimming pools can be equipped without any loss of function.



During development, importance was also attached to offering extremely flexible areas of application, which makes it possible to use the skimmer for e.g. concrete and liner pools

Strainer basket integrated in the front insert, top V4A stainless steel and a highly attractive waterline: B 600 EVO offers various appealing details



B 600 EVO – Technical specifications

Min. suction capacity	13 m ³ /h
Max. suction capacity	25 m ³ /h
Connector size	2"
Intake width	636 mm
Intake height	75 mm
External dimensions (w x h x d in mm)	710 x 290 x 490

Surface skimmers

B 600 EVO

B 500 EVO



Innovative, functional and exceptionally aesthetic – the new B500 EVO, especially for small pools.

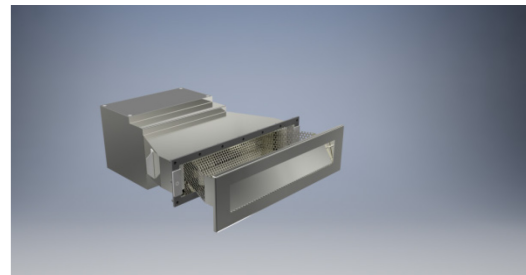
Even for small pools, functionality, aesthetics and design must not be excluded in times of sophisticated customer requirements.

With the B 500 EVO, BEHNCKE presents another new feature: With the strainer basket as a part of the skimmer front, no additional service opening is needed. This multiplies pool surrounding design options.

The B 500 EVO surface skimmer from BEHNCKE - the aesthetic and functional trend setter among skimmers.

Thanks to its 422 mm wide and only 75 mm high intake port, the new B 500 EVO, specially developed for small pools, has an extremely aesthetic appearance. Due to this, minimal water level edges can be achieved, allowing an enormously high waterline even on small surface skimmer pools.

On account of the large skimmer flap, an extremely high circulation capacity is achieved in the rear part of the surface skimmer by means of a suction port with a 2" female thread. The B 500 EVO is completely made from top quality V4A stainless steel – including the strainer basket.



Strainer basket as a part of the skimmer front: B 500 EVO skimmers multiply pool design options.

The corresponding settling chamber for the operation of an electronic water level controller is already provided as standard.

Importance has also been attached to offering extremely flexible areas of application, which makes it possible to use the skimmer for concrete, liner and FGRP pools.

B500 EVO - Technical specifications

Min. suction capacity	8 m ³ /h
Max. suction capacity	15 m ³ /h
Connector size	2"
Intake width	422 mm
Intake height	75 mm
External dimensions (w x h x d in mm)	500 x 290 x 490

Your authorized dealer