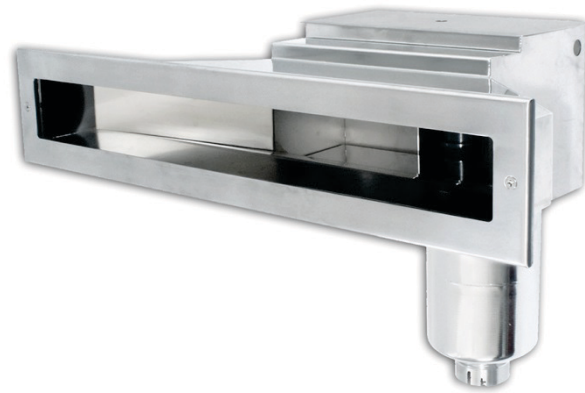


## Surface skimmers

### B 600 Slim

### B 500/501 Slim



The B 600 Slim provides completely new possibilities for aesthetic architecture for large surface-skimmer pools.

In times of sophisticated customer requirements with respect to aesthetics and design, the development department of BEHNCKE has opened the door to a new skimmer dimension with the B 600 Slim. This innovation ultimately means a complete redefinition of the creative interplay between aesthetics and appearance and consequently the interaction between water and the pool.

With the B 600 Slim surface skimmer BEHNCKE has set new skimmer technology standards worldwide.

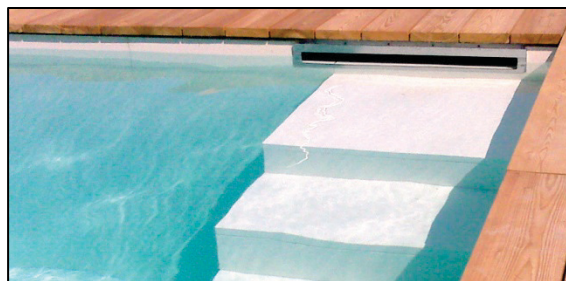
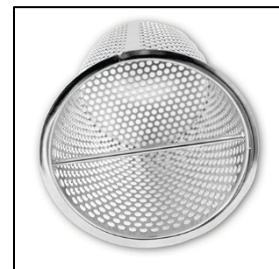
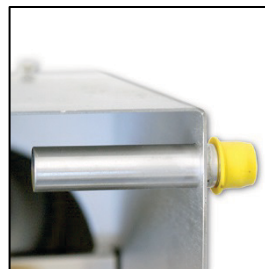
Thanks to its 665 mm wide and only 85 mm (!) high intake opening, the innovative B 600 Slim has an extremely aesthetic appearance. As a result, water level edges of up to 60 mm (!) can be achieved, allowing a high and therefore visually highly attractive waterline with surface skimmer pools.

On account of the large skimmer flap, the B 600 Slim achieves an extremely high circulation capacity in the rear part of the surface skimmer by means of a suction port with a 2" female thread and a 2½" male thread that considerably optimize the pipe friction losses. As a result, even large-volume swimming pools can be equipped without any loss of function. And with the installation of a sealing coat flange, in compliance with DIN standard 18195 (building structure seal), the system is acceptance compliant.

In addition, the B 600 Slim has a deep stainless steel strainer basket, which allows a considerably higher flow volume, while requiring only a minimum of maintenance work. Alternatively, the B 600 Slim can be operated with mechanical or electronic level control, the latter enabling connection to BEHNCKE Control, a high-quality automation system.

During development, importance was also attached to offering extremely flexible areas of application, which makes it possible to use the skimmer for concrete, liner and FGRP pools. It is even provided with a DIN-compliant fresh water supply as standard (certified in accordance with DIN EN 1717 and DIN 1988-100).

*Finished in high-quality V4A steel down to the last detail, with a DIN-compliant fresh water supply. The deep strainer basket (optional for the B 500/501 Slim) guarantees a high flow volume and minimal maintenance work.*



#### B 600 Slim - Technical specifications

Min. suction capacity	13 m <sup>3</sup> /h
Max. suction capacity	25 m <sup>3</sup> /h
Connector size	2" internal thread, 2 1/2" external thread
Intake width	665 mm
Intake height	85 mm
External dimensions (w x h x d in mm)	710 x 470 x 490

## Surface skimmers

**B 600 Slim**

**B 500/501 Slim**



GOLDEN WAVE 2011



**The new B 500 Slim. The standard for skimmers for small pools. Innovative, functional and exceptionally aesthetic. Awarded the Golden Wave 2011 prize.**

Even for small pools, functionality, aesthetics and design must not be excluded in times of sophisticated customer requirements. With the B 500 Slim in particular, BEHNCKE's engineers have managed to develop one of the most innovative skimmers for low-cost entry into the pool world. Ultimately this means a complete redefinition of the creative interplay between aesthetics and appearance and consequently of the interaction between water and the pool.

This sustained commitment to innovation and quality has been rewarded by the award of the "Golden Wave 2011" prize to the B 500 Slim by the renowned trade magazine "Schwimmbad & Sauna" (Swimming Pool & Sauna).

**The B 500 Slim surface skimmer from BEHNCKE - the aesthetic and functional trend setter among skimmers.**

Thanks to its 460 mm wide and only 85 mm (!) high intake port, the new B 500, specially developed for small pools, has an extremely aesthetic appearance. Due to this, minimal water level edges of up to 60 mm (!) can be achieved, allowing an enormously high waterline even on small surface skimmer pools.

On account of the large skimmer flap, an extremely high circulation capacity is achieved in the rear part of the surface skimmer by means of a suction port with a 2" female thread and a 2 1/2" male thread. In addition, the B 500 Slim optionally has a deep stainless steel strainer basket for a high flow volume, while requiring a minimum of maintenance work. Optionally, the B 500/501 Slim can be operated with mechanical or electronic level control.

The corresponding mounting and settling chamber for this are already provided as standard (as is also the case on the B 600 Slim Slim). The electronic level control is also compatible with BEHNCKE Control, a fully automatic pool control system.

Importance has also been attached to offering extremely flexible areas of application, which makes it possible to use the skimmer for concrete, liner and FGRP pools. It is even provided with a DIN-compliant fresh water supply as standard (certified in accordance with DIN EN 1717 and DIN 1988-100).

**B 501 Slim. The specialist for FGRP pools.**

The B 501 Slim is an innovative special version for FGRP pools. Right-angled and therefore simplified installation of the piping is made possible thanks to a 3° flange bevel. Other angles are always possible on request, likewise execution with a deep stainless steel strainer basket or sealing coat flange (DIN 18195).

### B500/501 Slim - Technical specifications

Min. suction capacity	10 m <sup>3</sup> /h
Max. suction capacity	15 m <sup>3</sup> /h
Connector size	2" internal thread, 2 1/2" external thread
Intake width	460 mm
Intake height	85 mm
External dimensions (w x h x d in mm)	500 x 370 x 490

**Your authorized dealer**