

EVA

EVA's Pool Experience



Residential swimming pools

Sports, fun, and wellness; enjoy your swimming pool (again), all year round!



The EVA Experience

AT HOME

In the world of swimming pools, EVA Optic is synonymous with innovation. We are known for our indestructible LED lighting but we also see new opportunities. New opportunities to enjoy swimming and sports even more. For example, by enhancing the ways you can use your swimming pool.

Rediscover your private pool

You may have had a swimming pool in your garden for years. But, perhaps you no longer use it that often because it's just not big enough to swim laps comfortably.

Swimming all year round

We want you to enjoy your pool all year round. That is why we developed the EVAstream counter-current swimming machine. This machine can easily turn any swimming pool into a home fitness environment. Now you'll use your pool for more than just a refreshing dip on hot summer days. From now on, you can start your working day with an energetic workout or you can take a relaxing dive in the evening to release all the stress of a busy day. The EVAstream means that you'll be enjoying your swimming pool all year round!

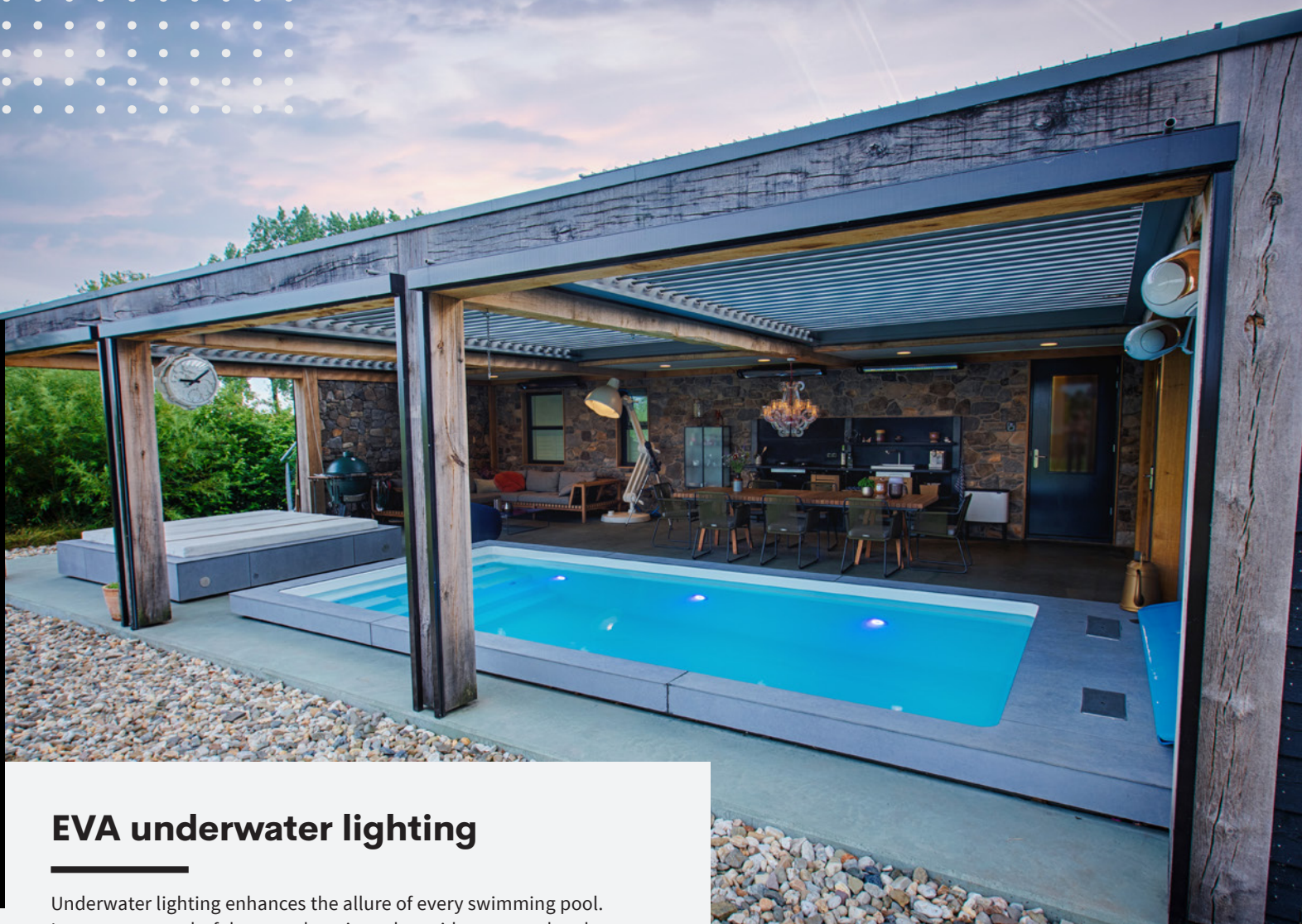
"We want you to enjoy your pool all year round."

Create a total experience

With our multicoloured LED lighting (both above and under water), it is easy to create any ambience you want. Increase the safety of your pool with our Eveye underwater camera to get a full experience!

Create your own EVA Experience

This brochure is a source of inspiration, regardless of whether you already have a swimming pool or are thinking of installing one. Not only do we show you loads of options, but we also explain what you need to take into account. We'll help you to get the most out of your pool experience!



EVA underwater lighting

Underwater lighting enhances the allure of every swimming pool. It creates a wonderful atmosphere in and outside your pool and in the surrounding garden and terrace. With our multicoloured LED underwater lighting, you can even change the ambiance at the push of a button.

EVA Optic is a specialist in light experience

EVA LED underwater lighting was originally developed for public swimming pools and water parks. As the preferred supplier of the atmospheric Center Parcs water parks, we are experts in creating the ultimate swimming pool lighting experience.

“As the preferred supplier of Center Parcs subtropical water parks, we are experts in creating the ultimate swimming pool lighting experience.”

Professional quality in your own swimming pool

We developed the R(X) LED underwater lighting product range especially for residential swimming pools. With this range we now offer the same quality and durability, which used to be exclusive to the professional market, for your own swimming pool.

The R(X) model is based on our professional A-series and complies with the international IEC EN 60598-2-18 safety standard. Because it is highly durable and extremely safe, we offer a standard 4-year manufacturer’s warranty.



EVA R(X) series

Especially for private swimming pools, we developed the EVA R(X) series. This series consists of underwater lights for existing and newly built pools, either in a mono colour or in multicoloured RGBW.

R(X)-series: RX Eco mono RX Smart RGBW R6 RGB

NEW! RX Eco mono colour

New in our product range is the dimmable EVA RX Eco mono LED underwater lamp. The RX Eco is available in 3 different mono colours; Warm White (3000K), Daylight White (6500K) and Ocean Blue with an astonishing high light intensity, at an energy consumption of just 20W per lamp. This lamp is called "Eco" for good reason.

The RX Eco offers atmospheric underwater lighting in your swimming pool; suitable for every type of pool, easy to install *and* at a budget price. But, you can make your pool experience even more complete with our multicoloured underwater lighting.

A swimming pool often only needs 2 or 3 RX Eco 20W lamps to create even illumination throughout the entire pool. How do we do that? We only use the latest and best product components. In addition to that, we use smart technologies that keep the product price low, without compromising on quality.

NEW! EVA RX Smart RGBW

The new RX Smart is a DMX-operated 20W RGBW lamp for residential swimming pools. The RX Smart works via the universal DMX512 protocol. A spectacular show of colours, tailored to your wishes. Change the light colour or scene with the remote control, touchscreen panel, dimmer, or with the app on your tablet or smartphone.

Synchronise the RX Smart underwater lights flawlessly with EVA's multicoloured downlights and spotlights in your garden and terrace via DMX. You can also link the EVAstream and other equipment (e.g. terrace heaters) to the system. The DMX controller operates everything from a central location, or in combination with your tablet or smartphone. Available with Daylight white (6500K) or warm white (3000K) LEDs.

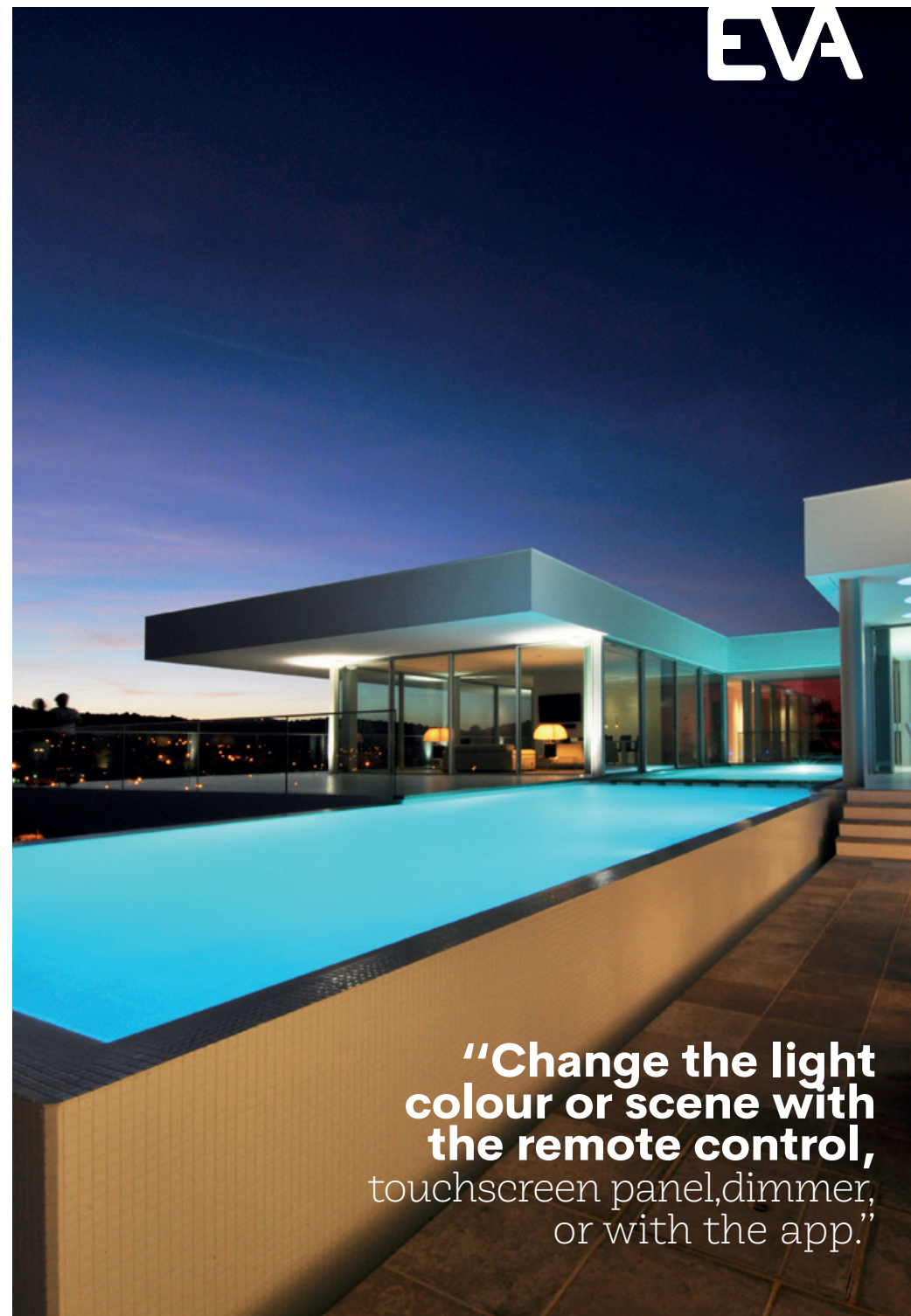
For halogen replacement: EVA R6 RGB

Do you still have halogen underwater lighting? Then your options for an upgrade are limited. Your lighting installation, with a 2-wired powerline, is not compatible with regular multicoloured DMX lights. However, for such situations there is now a multicolour lighting solution available!

The R6 RGB offers multicoloured lighting over a regular 2-wired powerline (no DMX). Basic colour synchronisation for up to 6 lamps. Choose one of the standard pre-programmed colours or colour-changing scenes and enjoy!



EVA



"Change the light colour or scene with the remote control, touchscreen panel, dimmer, or with the app."

EVA

EVA — Other EVA underwater lighting



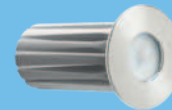
Our other underwater lights:

Apart from the R(X) series, our underwater lighting product range also includes, among others, the following luminaires. Mono or multicolour controllable.



EVA Q2 10W

- Comparable to 100W halogen
- For pool stairs and shallow pools
- Fits on a 3/4" BSP thread



EVA B2 10W

- Comparable to 100W halogen
- For whirlpools and prefab pools
- Fits on a 2" BSP thread

Can be used
above and
under water!



EVA A6 20W

- Comparable to 200W halogen
- Same model and size as the R(X) series
- Mono or RGBW (with white LED)



EVA A12 40W

- Comparable to 400W halogen
- Same model and size as the R(X) series
- Mono or RGBW (with white LED)

EVAstream counter-current SWIMMING MACHINE

“Start your working day with an energetic workout

or take a relaxing dive in the evening to release all the stress of a busy day.”

Our latest innovation is the EVAstream. The most compact and the most powerful counter-current swimming machine on the market. Now you can use your swimming pool all year round, regardless of its size.

Rediscover your private pool

You may have had a swimming pool in your garden for many years. But, perhaps you no longer use it that often because it's just not big enough to swim laps comfortably.

Even a small pool suffices

Perhaps you're thinking of building a new swimming pool in your garden, but you don't have a lot of space. And, you'd also like to keep the costs down. With the EVAstream, you can do loads of different swimming strokes and other fitness exercises, even in a small swimming pool. This not only reduces the initial cost of the pool and the necessary equipment, you'll also have significant savings on the operating costs over the years to come.

Swimming all year round

The EVAstream makes a private swimming pool more appealing and attainable for many more people. Start your working day with an energetic workout. Or take a relaxing dive in the evening, to release all the stress of a busy day. The EVAstream means that you'll be enjoying your pool all year round.

Challenging for athletes, fun for the kids

The EVAstream is so powerful that it even offers a challenging workout for top-level competitive swimmers. Perfect your swimming techniques, work on your physical condition and increase your stamina.

However, it is not just experienced swimmers who will love the EVAstream. Thanks to the quiet, stable, and controllable stream, the machine will be an asset for the whole family. You can do your regular laps, a workout, take up aqua-jogging, or even do a physical therapy routine. And the kids? They'll have a ball. Create rapids in the swimming pool or place the machine on the pool bottom for an amazing underwater volcano.

Safe

The EVAstream has been engineered to perfection, extensively tested, and is 100% in compliance with the strictest quality and safety standards. The EVAstream is available in both a built-in version and a surface-mounted version. This makes the EVAstream suitable for every type of swimming pool.

Affordable through smart design

The development of the EVAstream was based on 3 principles:

- The machine must be so powerful that it can be used by even the best competitive swimmers
- The machine must be as compact as possible
- The machine must be affordable for everyone

And that is exactly what we achieved! The EVAstream is available for €7,995 excl. VAT.





Eveye UNDERWATER CAMERA

The Eveye is *not* a drowning detection system, but it is a practical device that can be used as an extra pair of eyes in the pool.

The Eveye underwater camera gives a crystal-clear image below the water. You can view it in real-time on your tablet or smartphone. The Eveye underwater camera can serve as an extra pair of watchful eyes, so you can relax and enjoy yourself. An additional safety element for your swimming pool experience. It goes without saying that the Eveye is not intended to replace personal supervision at the pool.

Safe and fun

The Eveye also offers a great additional fun factor in your pool. Watch real-time underwater images and store them on the hard disc of the HD recorder. While the children show off their best underwater tricks, you take great snapshots and video clips that you can easily send to your tablet or smartphone. The camera is compact and fits in a standard EVA underwater lighting installation housing.

**“Create a wonderful
ambiance on your
terrace and in
the garden.”**



EVA LED ABOVE WATER AMBIENT LIGHTING

That unique feeling of freedom and happiness when floating around in your own swimming pool, such luxury! So why not add EVA's enchanting lighting; not just under water, but also above. Create a wonderful ambiance on your terrace and in the garden. Control the atmospheric lighting from a central location, perfectly in sync with your underwater lighting. An incredible experience!

Alluring light display

All of EVA's ambient lights are available in daylight white (6500K), warm white (3000K) or RGBW (with daylight white or warm white). Our downlights, spotlights and pendants were specially designed for the demanding swimming pool environment. All lighting systems work together flawlessly. Program your own scenes, synchronise all lamps or divide them into groups, adjust the light intensity, or choose the most beautiful colours from the extensive palette. Easily and intuitively operable with the remote control, touchscreen panel, and via your tablet or smartphone.





EVA Experience CONTROL SYSTEM

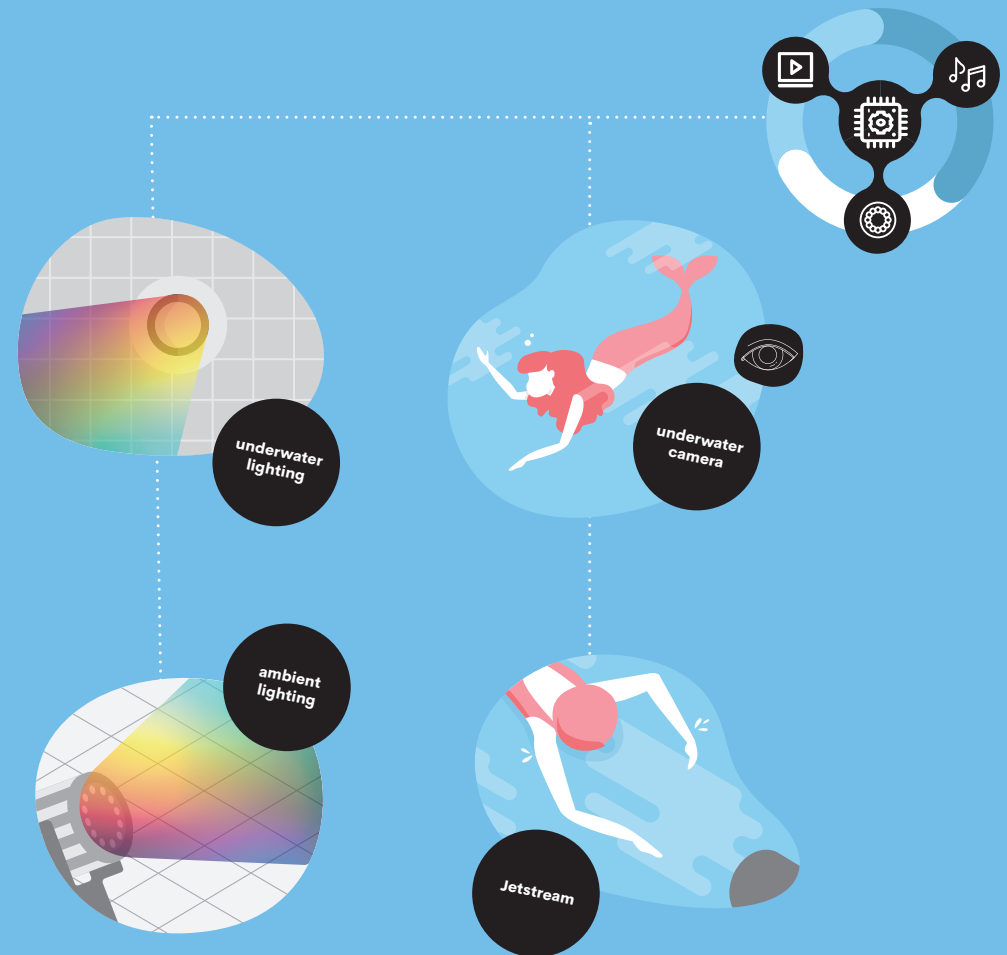
How would you like to assemble your swimming pool experience? Would you choose a single element, such as EVA's underwater lighting? Or would you like to go for the full experience with lighting, camera, and the EVAstream counter-current swimming machine?

Control: from basic to extensive

There are many options when it comes to controlling our products. From a simple on/off switch, stepless dimmer, or remote control to a fully centralised control system that operates all systems via a DMX touch-screen panel, even in combination with a tablet or smartphone. The choice is yours!

Everything works together

Would you prefer a centralised control system? Then we'll link all of the elements (except the camera) via DMX. With the DMX controller, you operate not only the underwater lighting, but also the RGBW downlights and spotlights. Completely in sync. Select the exact colour from the palette, dim the lights with the stepless dimmer, and play your own customised colour scenes. It is even possible to link the lighting to audio so that the lights are synchronised with the beat of the music!



Centralised control with DMX

EVAstream with training programs via DMX

You can also link the EVAstream swimming machine to the DMX system. Choose one of the pre-programmed workouts and adjust it any way you want.

With the controller, you can even let the system operate your terrace heaters, swimming pool cover, windscreens, and sliding roof. Everything works together and you're in control!





Phase 1: Inventory

NEW-BUILD

On the next pages, we'll help you to make an inventory and plan your new swimming pool project. We have a list of questions to ask yourself, and offer tips so that you'll be well-prepared. The first step is making an inventory, not just of your wishes and situation but also of available (new) options.

“The first step is making an inventory, not just of your wishes and situation but also of all available (new) options.”

Some questions you can ASK YOURSELF ABOUT...

...how you want to use your swimming pool:

- Who is going to use the pool?
- For which activities will the pool be used?
- What pool size would you need for that?
- Would you like to use the pool all year round?
- What other wishes/requirements do you have? Terrace, barbecue, outdoor kitchen, whirlpool, sauna, storage space for water toys? These aspects need to be taken into account when considering the available space!

...the building and location of the swimming pool:

- Will it be an indoor/covered pool or not?
- How much space do you have available?
- In what type of soil will the pool be built?
- Do you want to have a crawl space around the pool for maintenance?
- Where will the installations be housed (pump, filter, heating)?
- Do you need a building permit?
- Are there any local environmental regulations that may be restrictive?
- Will you be adding a terrace? In the open air, covered, or both (e.g., a slatted or sliding roof)?
- Where does the sun come up and go down?
- What is the prevailing wind direction? Will this affect the ideal location?
- Be sure to consider your privacy.
- And last but not least, what is your budget?

Environmentally FRIENDLY

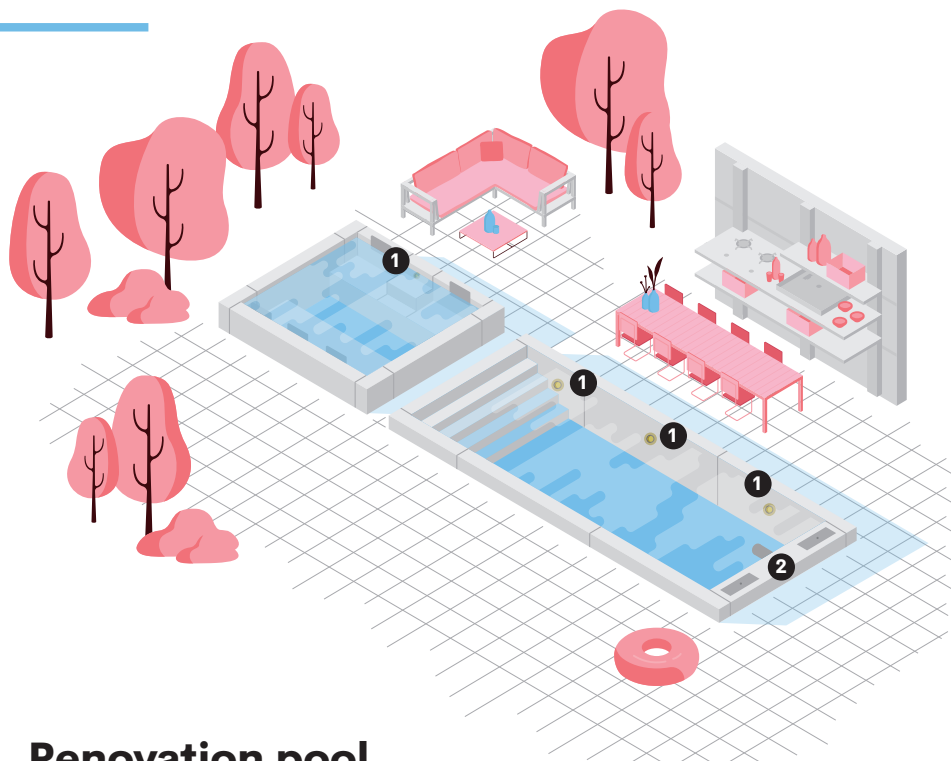
As keen fans of nature and a healthy environment, we do everything we can to minimise the environmental impact of EVA products. For example, our LED underwater lighting uses less than 10% of the energy consumed by a halogen lamp with a similar light output. And fortunately, there are many more great eco-friendly options and choices to consider when you want to build your swimming pool.

Eco-friendly OPTIONS

- 1 Choose the right size swimming pool. People often go for a larger pool because they want to swim laps. But to do so, you really need quite a large pool. The EVAstream enables you to swim and get a good workout, even in a small pool. A smaller pool requires significantly less energy, which is good for the environment and your budget.
- 2 Start at the bottom! The easiest way to save energy is to ensure that the pool is perfectly insulated. A sufficiently thick insulating layer prevents unnecessary heat loss. When you combine this with a good quality cover, you achieve optimum heat retention.
- 3 Turn down the thermostat a notch. Every additional degree that you increase the temperature of the pool water results in a 15-18% increase in energy consumption and operation costs.
- 4 Use solar heating to keep the temperature of your pool water at a comfortable level. There are many options, so compare and choose the one that's right for you!
- 5 Eco-friendly filters. Choose, for example, a glass filter medium like AFM by Dryden Aqua. AFM is not just more sustainable than regular sand filter systems, but it also prevents the formation of harmful disinfectant by-products. It requires less chlorine and reduces the loss of backwash water. If you prefer not to use any chemical substances, you can opt for an all-natural filtering system. Part of the pool will then contain plants, making the pool entirely self-cleaning without the need for chemicals.

Phase 2:

INSPIRATION



Renovation pool

REPLACING HALOGEN WITH R6 RGB

This example shows an existing pool with halogen lighting. The owner wanted to have multicoloured underwater lighting. But this was technically difficult, since there is only a standard 2-wire powerline available. We've developed EVA R6 RGB lights especially for this kind of situation. Multicoloured lighting plus some colour-changing scenes, only without the extensive options of a DMX installation.

With the R6 RGB underwater lights and the EVAstream (surface-mounted version), you can create a fantastic experience with multicoloured lighting and the ability to enjoy a great workout in your existing swimming pool, without the need for constructional adjustments. Naturally, the experience could also be enhanced with other elements.

- 1 R6 RGB underwater lighting (multicoloured light over 2-wired powerline, no DMX)
- 2 EVAstream (surface-mounted version)

Newly built pool

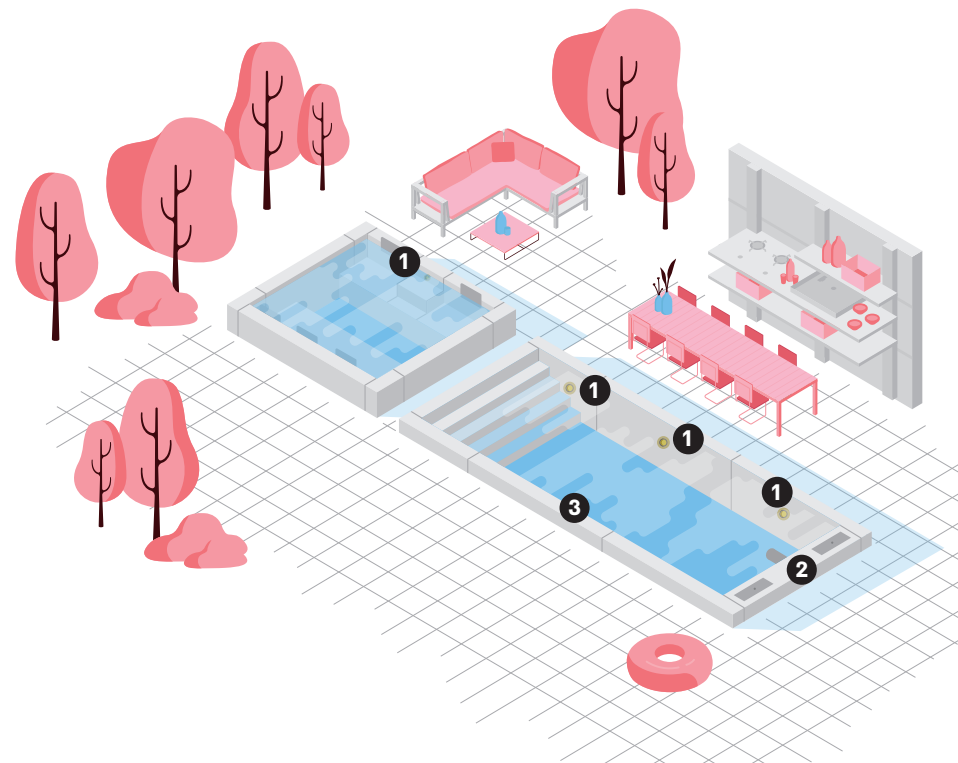
A STRONG FOUNDATION

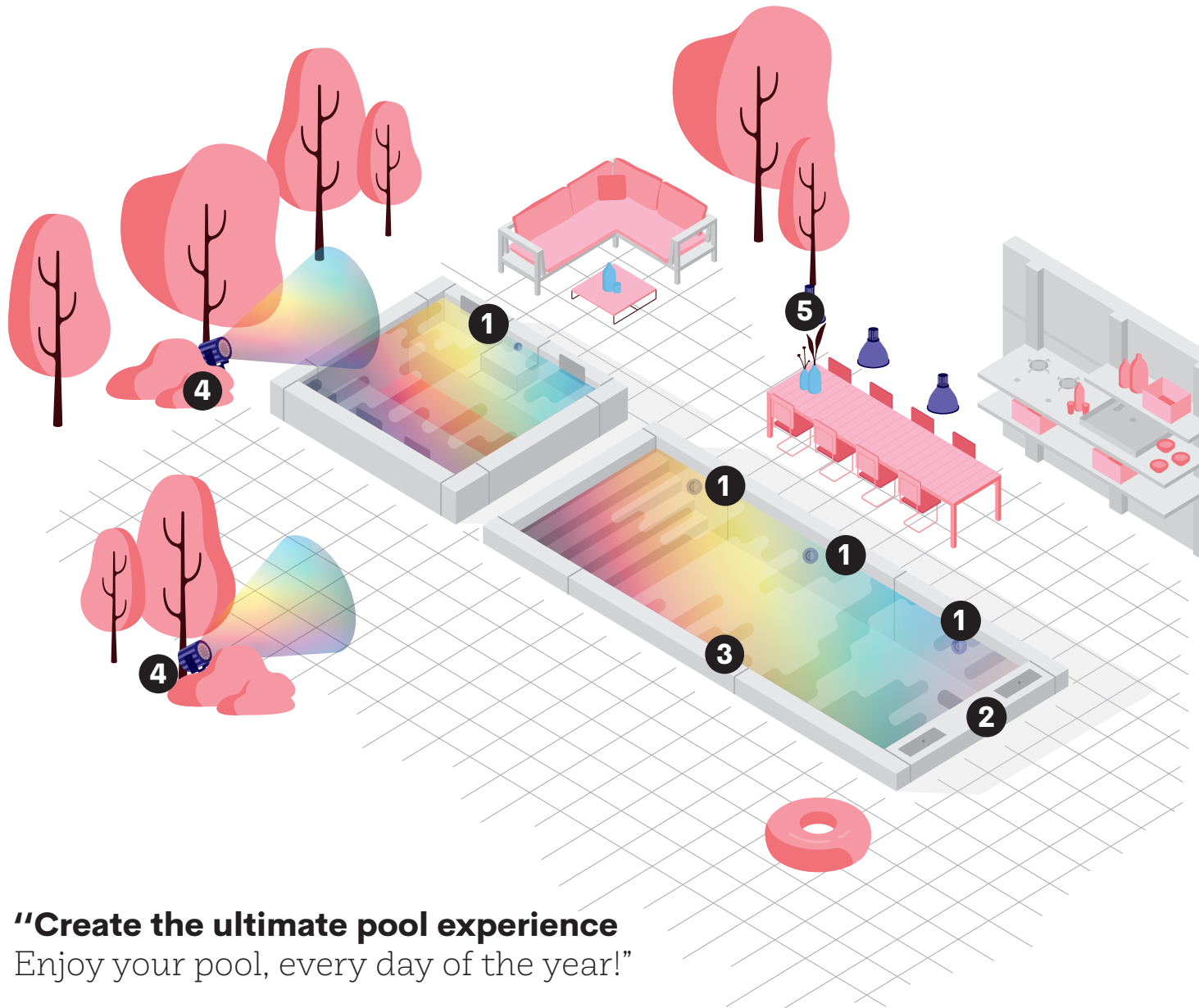
This example shows a new pool. The owner wanted to enjoy a pleasant swimming pool experience with a focus on relaxation and sports. A comfortable environment to enjoy tranquillity, wellness, and exercise.

There are various options for operating the installations, including the control of both the light intensity and the current speed of the jet. Naturally, the experience could also be enhanced with other elements.

RX Eco underwater lighting is available in 3 mono colours: daylight white, warm white, and ocean blue. The surface-mounted version of the EVAstream is installed for flexible use. The Eveye underwater camera can serve as an extra pair of eyes for increased safety.

- 1 RX Eco underwater lighting (mono)
- 2 EVAstream (surface-mounted version)
- 3 Eveye underwater camera





“Create the ultimate pool experience
Enjoy your pool, every day of the year!”

Newly built pool

CREATING THE ULTIMATE SWIMMING POOL EXPERIENCE

This example shows a new pool. The owner wanted to create a perfect experience of light, sound, and wellness. A full colour metamorphosis of the pool, terrace, and garden at the touch of a button.

Are you going for the ultimate experience? Then the multicoloured lighting under and above water can be centrally controlled via the universal DMX protocol. This allows all elements to work together flawlessly, enhancing each other to create the perfect atmosphere.

Not only can you program your own favourite colours and colour-changing scenes, but you can also design customised training programs for the (built-in) EVAstream. Or adjust the pre-programmed workout sessions to meet your needs. Combine all of these elements to create the ultimate swimming pool experience at home, all year round!

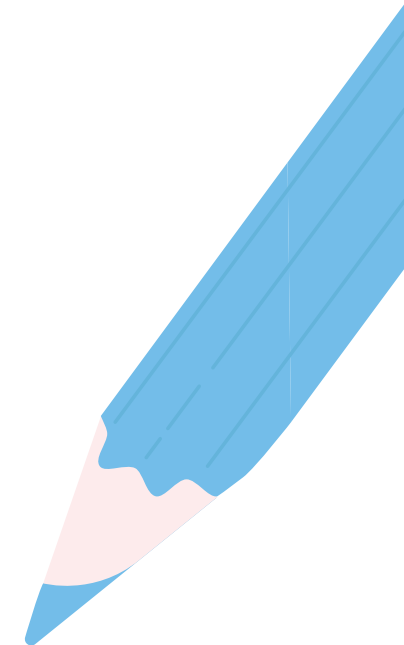
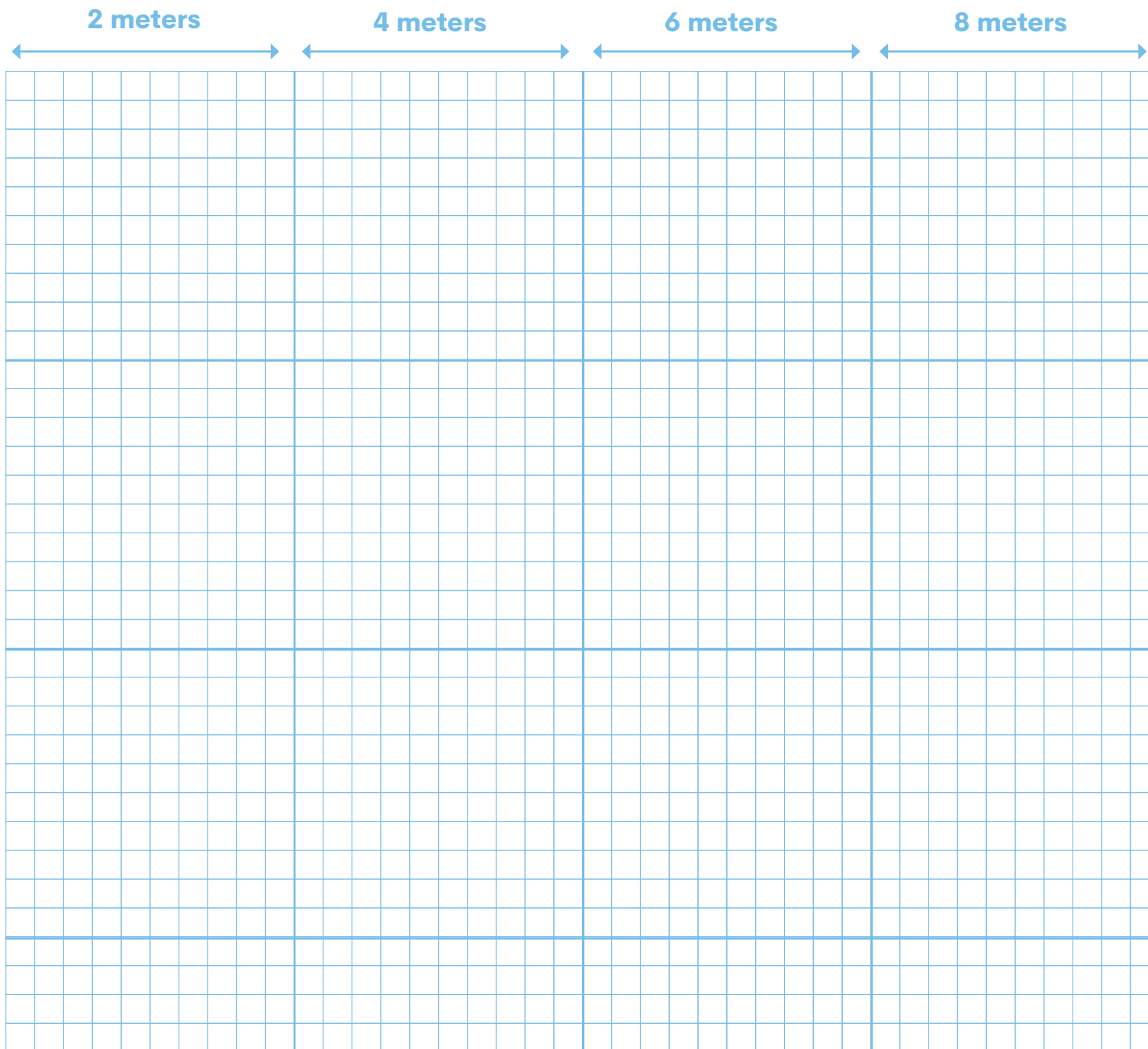
- ❶ RX Smart RGBW underwater lighting (DMX)
- ❷ EVAstream (built-in version)
- ❸ Eveye underwater camera
- ❹ Hydra spotlights RGBW
- ❺ Pendra luminaire RGBW

EVA

EVA — Phase 2: Inspiration

"Combine all of these elements to create the ultimate swimming pool experience at home, all year round!"





Phase 3:

CREATION

Some practical tips:

- It's best to place the underwater lighting on the terrace side of the pool. This will prevent you from looking directly into the lights from the terrace.
- You need to be aware that the choice for the material used to line the swimming pool (tiles, polyester, etc.) will affect how you experience the colour(s) of the underwater lighting. For example, dark tiles absorb a lot of the luminaire's light.
- We have accessories available for recessed and surface mounting. For renovations we also have cover plates available for replacing all types of underwater lights. Accessories for the A series, the R series, and the Eveye are interchangeable.

Phase 4: EXPERIENCE

When the construction of your swimming pool has been completed, you undoubtedly want to get the most out of your experience. So let us offer a few final tips for health, exercise and wellness:

- 1** Swimming is one of the few sports that gives you an energy boost immediately after the activity.
- 2** With an intensive swim training, you can burn 500-750 kcal per hour.
- 3** Swimming improves your sleeping pattern. You will fall asleep faster and the quality of your sleep improves.
- 4** Swimming is a real, full-body workout. The resistance created by the water ensures that swimming becomes strength training for the entire body.
- 5** Swimming is a low-impact sport. It creates no strain on the joints, tendons, and muscles. Swimming is a sport with a very low risk of injury.
- 6** Swimming strengthens your lung capacity and is often recommended to people suffering from asthma.
- 7** Swimming reduces stress levels in your body and also ensures that you'll be better able to cope with stress.
- 8** Swimming reduces pain associated with diseases such as MS and rheumatism, and it increases mobility.
- 9** Swimming improves blood circulation, lowers blood pressure, and strengthens blood vessels.
- 10** Swimming improves your mood because it stimulates the production of the happiness hormone serotonin.
- 11** Swimming can be done by everyone; young and old, beginners and top athletes, and everyone in between.



Colour therapy AT HOME

For centuries, people have used colour therapy for both mind and body. Now you can try it yourself with EVA's multicoloured lighting:

- Red**
Stimulating and vitalising
Good for the heart and lungs, improves circulation, anti-depressant
- Orange**
Uplifting, energising, and warming
Strengthens the immune system and improves digestion
- Yellow**
Activating and joyful
Strengthens the immune system and improves mental performance
- Green**
Healing and relaxing
Relieves stress and tension headaches, helps fight the flu and viruses
- Turquoise**
Enlightening and harmonising
Calming for the skin and organs, stress-reducing
- Light blue**
Cooling and relaxing
Reduces inflammations and is antiseptic, lowers the blood pressure
- Deep blue**
Calming and relaxing
Antibacterial, improves sleep and learning capacity
- Purple**
Cleansing and uplifting
Strengthens the nervous system and brain, helps against fatigue
- Pink**
Rejuvenating and warming
Strengthens positive emotions and compassion, cleanses the skin

What experience are you looking for?

With EVA Optic products, you'll enjoy your own swimming pool (again), all year round. We are here to help you create your ideal swimming pool experience!



EVA

EVA Optic B.V.

De Velde 1

8064PH Zwartsluis

The Netherlands

+31 (0)38 33 75 067

sales@evaoptic.com

www.evaoptic.com